



Company
Profile

--

2016



*The Best Value comes from
The Integrity of Successful
& working Perfectly.*

Introduction

Management System

Maintaining a management system complaint to ISO Standards Reviewing our management system on continual basis for robustness.

Setting and reviewing quality objective to meet our business goals.

Testing Facilities

Visiontech has a Unique quality system committed by every team member & documented as per standards. All testing is done under International standards including IEC 429, IS8623.

- A Engineering Approach to Product – Oriented Business
- The Project Defines the Products
- Engineered Solutions to Unique Situations

PAGE OF CONTECNTS

2 . Introduction

4 . Company

5 . About us

6 . Services

7 . Services

8 . Manufacturing

9 . Manufacturing

10 . Certification

11 . Automation

12 . Automation

13 . Automation

14 . Automation

15 . Automation

16 . Automation

17 . Automation

18 . Renewable Energy

19 . Renewable Energy

20 . Client

21 . Client

Commitment

Our committed team of highly qualified personnel has proven skills in project management. Our organization is backed by our rich vendor base that assists us in the procurement of these high quality products at par with the set international standards. The expertise of our professionals makes them competent for the selection of these vendors on the basis of their market reputation, production, quality measurements, clients response and many more characteristics. Support of our certified vendors enables us to complete evergreen requirements of our valued clients.



Company

Our Vision

To be a leader in the field on Industrial Automation Solution Provider by thinking globally, understanding responsibilities, take appropriate decisions & overall act smartly

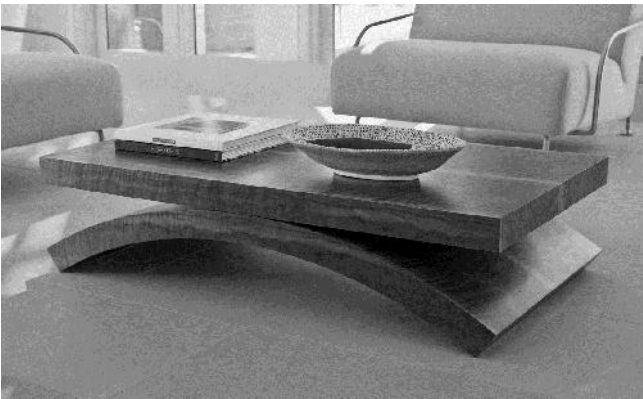
Customer Satisfaction

Providing our Customers with products & Services that meet or exceeds their requirement

VISIONTECH GROUP is supported by a team of well qualified, experienced and committed professionals, adopting "distribution methodology" ensuring prudent and committed response to our customer's application and service requirement. We provide complete solution for Power & Energy, Process Control & Instrumentation, Batch and Motion Control application from conceptualization stage to after sales service and AMC In order to achieve high performance of process and control system our and AMC. In order to achieve high performance of process and control system, our engineers have varied experience in application as well as capacity to handle / integrate all range of automation products available in the Industry.

About us

Our Values



We Visiontech are one of the well reckon Manufacturer , Solutions & Service Provider of Electrical Panels, Solar Energy, PLC, SCADA software, AC & DC drive, HMI, Servo Drive, Motors. We are one of the leading organizations in the field of Industrial Automation & Industrial Electronics, dedicated to providing long term, comprehensive solution to a widespread client base.



SERVICES

Fast – reliable – top class: you can rely on our service commitment even after you have made your purchase.



SOLUTIONS

Working as your partner, we can provide you with proven, repeatable industry solutions customized for your unique requirements.



CAPABILITY

You can rely on our team to provide a full scope of capabilities to deliver the solutions and services you need now and in the future.

Our Services

We at Visiontech, realize that you are looking to improve process availability, production capacity and manufacturing quality. With our Conversion Services, we can help you achieve this and more. From project management to start-up, we'll design and implement the ideal migration strategy for your facility.



PROJECT MANAGEMENT

ENGINEERING & PROJECT MANAGEMENT SERVICES

Success or Failure of a Project is highly dependent on the Professionals that manage the activities during the lifetime of that project. Project management by disciplined professionals can make or break your project. We at Visiontech gives a great platform to serve you

ONSITE SERVICES

Engage us for assisting your maintenance staff for preventive & reactive tasks With our On-Site Services, you can obtain Visiontech field support engineers to assist your maintenance staff with preventive and reactive tasks. Field support engineers are available on as needed, scheduled, or full-time basis to meet your specific needs and maintenance strategy.

Visiontech combines the capabilities of a full-service firm with the responsiveness & flexibility of a specialty engineering practice. We work with our customers through all phases of a project from front end project development services through commissioning and project close out. We bring in innovative ideas & technical solutions to help reduce costs, improve operations & accelerate projects. We combine engineering expertise & proven project methodology with a commitment to service to become a partner, clients can trust.

We Deals in :-

MANUFACTURING

- ☐ LT/HT & CONTROL PANEL
- ☐ MCC CONTROL PANEL
- ☐ POWER CONTROL CENTER
- ☐ ETP/STP PANEL
- ☐ PLC/AC/DC DRIVE PANEL
- ☐ PROCESS PANEL
- ☐ SYNCHRONIZATION PANEL

AUTOMATION PRODUCTS

- ☐ PHOENIX CONTACT
- ☐ SIEMENS
- ☐ ALLEN BRADLEY
- ☐ MITSUBISHI
- ☐ OMRON
- ☐ SCHNEIDER
- ☐ FUJI ELECTRIC

CONTROL CABLES

- ☐ POLYCAB
- ☐ HAVELLS
- ☐ PARASHIELD
- ☐ RR-CABLES
- ☐ LAPP CABLES

CONTROL & INSTRUMENTATION

- ☐ SMC
- ☐ FESTO
- ☐ PEPPERL N FUCHS
- ☐ BANNER
- ☐ HONEYWELL
- ☐ FANUC
- ☐ FORBES MARSHALL

Our Manufacturing

PCC Panels

We offer a wide range of PCC panels that is manufactured by using high grade raw material procured from certified vendors. Our range of PCC panels is fabricated as per the international quality standards and is widely used in chemical, oil and automotive industries.

Following are the salient features of our range:

- Performance oriented
- Longer functionality
- Versatile application areas

Using advanced machines and technology, we offer PCC Panels, which is manufactured keeping in mind the industry standards. These are available at industry leading prices to our clients and satiates the requirements of varied industries.



APFC Panels

We offer customized APFC panels for windmills, commercial complex, processing industries. Our range of APFC panels will reduce the electricity bills by approximately 25 %.

Features

- Shall be interfaced with PLC, Relays
- Thyristor based AFPC relays
- Digital Metering System
- Available in different current rating
- Suitable for LT/HT applications
- Improves Power quality by minimizing Harmonic current
- Equipped with necessary protection relays
- Contactors are provided with insertion resistors



Our Manufacturing

MCC & VFD Panels

We are the leading Manufacturer of high quality MCC/VFD Panels for multiple motors DOL or Star / Delta. The MCC Panels offered also conform to IP 54 degree of protection. All MCC Panels Are properly pre treated & then powder coated to withstand 1000 hours Of salt spray test. Some of the Salient features of our MCC Panels.

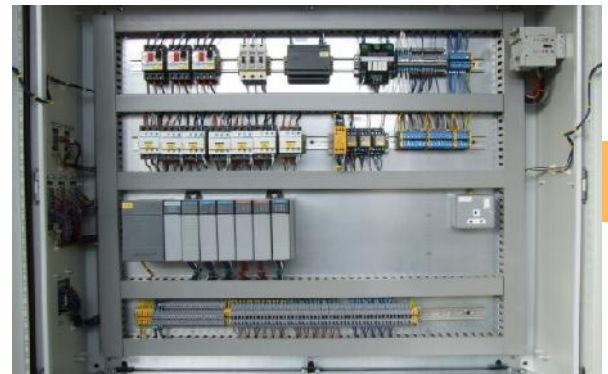


We offer motor control centers that are manufactured basically for centralized motor control of various industries along with remote control panels as well as control desk.

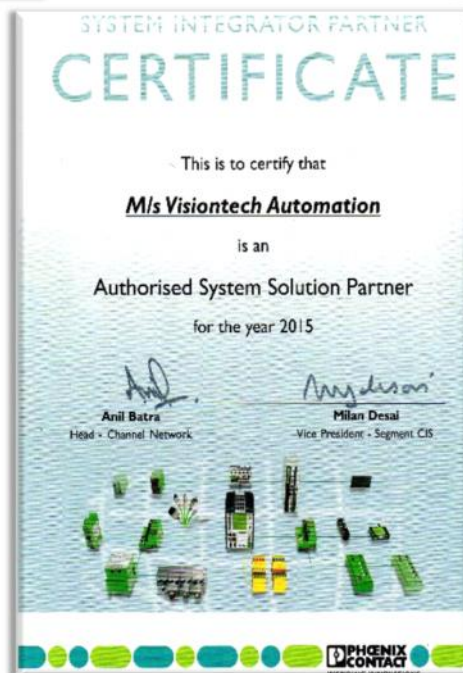
These are available with a multiple power stabs that help in operating high capacity industrial motors. Our range of motor control center is capable to feed larger load and have the following salient attributes.

PLC Control Panels

Programmable logic controller (PLC) control panels or also known as PLC Automation Panel are one of the most important and efficient kinds of control panels. Which are generally used in variety of electronic and electrical circuit fittings. PLC Control Panels we manufacture are highly capable of giving higher output at less power consumption. Integrated with solid PLC logic and flawless PLC hardware programming.



Certification



Automation Solution

Process Based

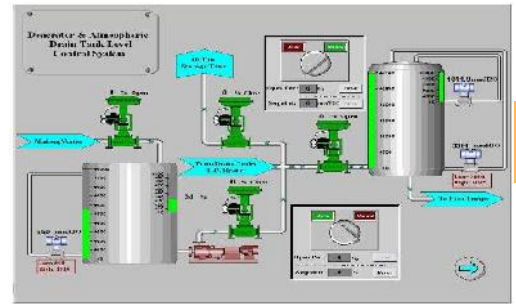
❑ Boiler Process

The Control of entire boiler operations has been visage through DCS based Control system for automatic control. For Burner monitoring system, L C Based has been considered for start – up of boiler. PLC will communicate with DCS through RTU Modbus facility.

BMSP LC control panel shall be mounted in Control room and local panel Shall be mounted near Burner in the field. Local panel has been considered For local indication & PLC/LOCAL operation selection for operator. In both Case PLC will take care of interlocking & protection system of BMS.

The major control of the boiler and its auxiliaries includes the following:

- Three element drum level control
- Automatic combustion control Automatic combustion control
- Bed temp control
- Fuel gas flow control (BMSPLC) & airflow control (INDCS)
- LD Of low control(BMSPLC)
- Super heated steam temperature control
- Furnace draft control



❑ Energy Monitoring System

An Energy Management System (EMS) is a system of computer-aided tools used by operators of electric utility grids to monitor, control, and optimize the performance of the generation and/or transmission system. The monitor and control functions are known as SCADA; the optimization packages are often referred to as “advanced applications”.



Automation Solution

Process Based

❑ Vibration System

All power generating units consist of primary or major machinery and secondary or BOP machinery. With little exception, all major machinery is monitored with a permanently installed continuous monitoring system. Most plants monitor their BOP machinery on a periodic basis using a portable data collector and database program. The continuous monitoring system for a medium or large steam turbine generator is called a Turbine Supervisory Instrumentation System (TSI System). A TSI System includes the typical radial displacement vibration and axial position measurements associated with high speed vibration rotating machinery but also includes measurements that are unique to the long and heavy rotors and machine cases required for steam turbines. Among these are; case expansion, differential expansion, run out (shaft bow), zero speed, valve position, and absolute shaft vibration.



❑ Printing Press System

In this project, there are four major divisions, i.e. Paper roller, 4 Print Units, Dryer Unit & Folder cutter unit. We had used separate PLC's on a single network.

We have to control the length of paper roll, and paper is fed into four print unit. Then this printed paper is fed into dryer for drying the ink. After drying it goes into folder cutting unit, in which it is folded & cut for proper size. In this machine we have to control the paper feeding, ink ejection with water curve, Dryer temperature with circulation & combustion blower control, folder size and proper cutting. This complete machine is graphically represented on RSview32 SCADA. The data are logged in a file and saved for future reference.



Automation Solution

Process Based

❑ BarCode Process

A barcode is an optical machine-readable representation of data. Originally, bar codes represented data in the widths (lines) and the spacings of parallel lines, and may be referred to as linear or 1D (1 dimensional) barcodes or symbologies. They also come in patterns of squares, dots, hexagons and other geometric patterns within images termed 2D (2 dimensional) matrix codes or symbologies.

Although 2D systems use symbols other than bars, they are generally referred to as barcodes as well. The first use of barcodes was to label railroad cars, but they were not commercially successful until they were used to automate supermarket checkout systems, a task in which they have become almost universal. Their use has spread to many other roles as well, tasks that are generically referred to as Auto ID Data Capture (AIDC). Systems such as RFID are attempting to make inroads in the AIDC market, but the simplicity, universality and low cost of barcodes has limited the role of these other systems.



❑ Poke-Yoke Process

A poke - yoke device is any mechanism that either prevents a mistake from being made or makes the mistake obvious at a glance.

The ability to find mistakes at a glance is essential because, as Shingo writes, "The causes of defects lie in worker errors, and defects are the results of neglecting those errors. It follows that mistakes will not turn into defects if worker errors are discovered and eliminated before hand". He later continues that "Defects arise because errors are made; the two have a cause-and-effect relationship. Yet errors will not turn into defects if feedback and action take place at the error stage".



Automation Solution

Process Based

❑ Power Automation System

Visiontech provide PLC controlled DG/TG /GG Set Automation. In our control philosophy provision is provided to select any generator as a lead generator. Basic requirement of selection of generator as a lead generator is to achieve the uniform running hours of all generators. We are expert in manufacturing DG synchronizing system which are used for automatic changeover from E.B mains to DGs at the time of E.B failure. When the E.B mains supply is restored, the system automatically changes back and stops the DGs.



AMF / LMS System Functions

- Auto start/stop
- Emergency stop
- Fault indication/Alarms
- Monitoring of Voltage, frequency, current of Mains , and DGs
- Monitoring of DG Temperature, Oil Level etc.,
- Manual start /Stop
- Status Indication

Synchronization System Features

- Suitable for 15 kVA to 2200 kVA DGs
- Automatic generator Starting, Load Sharing Stopping
- Frequency, Voltage, Current, kW, kVAr, kVA measurements
- Multifunction meters for measurement and indication
- Synchronization, Earth Fault, Over current, Over voltage, Under voltage, Reverse Power , loss of excitation Relays
- kW sharing/ kVAr sharing
- Fault indication
- Status signal indication

Automation Solution

Process Based

❑ Motion Control

A motion controller is used to generate set points (the desired output or motion profile) and close a position and/or velocity feedback loop. A drive or amplifier to transform the control signal from the motion controller into a higher power electrical current or voltage that is presented to the actuator. Newer "intelligent" drives can close the position and velocity loops internally, resulting in much more accurate control. An actuator such as a hydraulic pump, air cylinder, linear actuator, splined Johnson Rod, or electric motor for output motion.

One or more feedback sensors such as optical encoders, resolvers or Hall effect devices to return the position and/or velocity of the actuator to the motion controller in order to close the position and/or velocity control loops.



15

❑ Customized Report

In many manufacturing operations, plant personnel spend a significant amount of time manually recording process data and filling out production reports. This results in many wasted man hours and file cabinets full of paperwork. In addition to this, management must wait to see the process sheets, which may not contain up to date information. VisionTech can eliminate these problems by offering systems to display critical process data in real time on conveniently located monitors and allow the information to be accessed from anywhere using the internet. Data can also be automatically stored in a database for later analysis or to meet certification requirements. Custom production reports can also be automatically generated and delivered via email to the appropriate personnel.



Automation Solution

Process Based

□ ANDON System

The ever increasing performance requirements and production quality force to introduce solutions enabling quick response to adverse situations, control of current production, and analysis of these events.

To this end, our system ANDON is designed.

ANDON – full control over the production process.

Andon term comes from the Japanese language and means “light signals”. Andon system is part of the concept of “lean production”.

Our system ANDON enables:

- Collection and storage of information from production lines
- Notification of events by employees
- To recall the services
- To control the speed of responsiveness
- Analysis of all the collected information

Optional equipment ANDON system allow for counting production and indicators:

- Counting of good and bad pieces
- Determining the effectiveness – OEE
- Other production parameters

Our system ANDON is characterized by:

- Reliability, simplicity of construction and assembly
- Fast modernization
- The ability to adapt to individual needs
- Intuitive operation and excellent visualization of events and information
- High ergonomics taken into account at the design stage liability to set up remote access service

Our ANDON system consists of the following elements

- Bench terminals
- Information boards (large LED boards)
- Monitors
- Software



Automation Solution

Process Based

❑ Vision Camera System



The systems are used to solve a wide variety of industrial guidance, gauging, inspection, identification and sorting tasks – at up to thousands of parts per minute. Inspection tasks may include OCR/OCV, 1D and 2D-code reading, colour verification, precision alignment, assembly verification, general defect inspection etc.

The vision functions in the system includes:

- Reference point finding
- Measuring tools, height, width, distance etc.
- OCR/OCV tool for text reading and verification
- 2D-matrix (Data matrix) reading and verifying tools, including GS1 decoding
- Barcode reading and verifying tools
- Pixel counter tools
- Colour verification tools (VisioRead Colour only)
- Colour Codes (VisioRead Colour only)

❑ RFID System

Radio-frequency identification (RFID) is the use of an object (typically referred to as an RFID tag) applied to or incorporated into a product, animal, or person for the purpose of identification and tracking using radio waves. Some tags can be read from several meters away and beyond the line of sight of the reader. Most RFID tags contain at least two parts. One is an integrated circuit for storing and processing information, modulating and demodulating a radio-frequency (RF) signal, and other specialized functions. The second is an antenna for receiving and transmitting the signal.



Renewable Energy

Migration Strategies for your Facility

Visiontech Group is a renewable energy system developer , building large commercial & utility scale photo voltaic (PV) solar power plants solution.

18



Visiontech is one of the most competitive Solar EPC company in India providing Consulting-Engineering-Contracting-Commissioning services with extensive experience and expertise in the industry dedicated to development of solar power plants, rooftop systems, and marketing of solar power based utility products like Solar PV Modules , Solar Home Packs, Solar Street lights, Solar water heating systems, Solar water pumps, Solar LEDs etc. Visiontech Automation specializes in the development of green technology solutions that are Environment friendly, energy efficient and cost effective .

Renewable Energy

Solar System

☐ RENEWABLE ENERGY

Visiontech has been consistently working with industry bodies and NGOs towards addressing India's power crisis through promotion of energy efficient solar power solutions in India.

- ✓ Provides complete Solar EPC solutions
- ✓ Energetic & Dynamic approach for Providing
- ✓ Extraordinary benefits to our Clients
- ✓ Strong Dealer Network across India
- ✓ Team of Dedicated & Experience professionals
- ✓ Provides excellent after Sales service



☐ EPC Range

ON GRID & OFF GRID SOLAR POWER SYSTEM

VisionTech offers complete Turnkey solutions that are easy to install, operate and offer cost effective access to solar energy.

ON GRID SOLAR POWER SYSTEM

In on grid interaction system, the DC power generated from SPV panels is converted to AC power using power conditioning unit and is fed to the grid either of 11 KV three phase line or of 220 V single phase line depending on the system installed .

OFF GRID SOLAR POWER SYSTEM

Visiontech offers stand alone solar power solutions for those who are not able to get connected to the electricity grid due to non availability in remote areas , or where state electricity discoms are not able to supply regular electricity through its grid.

Visiontech Automation off grid solar power system offers solutions for small households to large office buildings.



The Client



Power Industry

- ☐ Jaypee Group
- ☐ Siemens Grid

Printing Industry

- ☐ Dainik Bhasker
- ☐ Hindustan Times

Automotive Industry

- ☐ CSIL, Visteon Group
- ☐ Mahindra 2wheelers
- ☐ Hero Moto Corp
- ☐ Honda Motors
- ☐ Federal Mogul
- ☐ A K Automotive
- ☐ Rico Auto
- ☐ Amtek Auto

Infra Industry

- ☐ Unitech Group
- ☐ Bharti Reality
- ☐ Gulshan Homes
- ☐ Ramprastha Green
- ☐ Pearl Group

Client Statement

Fiber & Textile Industry

- ☐ Vardhaman

FMCG Industry

- ☐ Reckit Benchiser
- ☐ Hindustan Unilever
- ☐ Unicharm
- ☐ DCM Shriram
- ☐ Simbhaoli Sugar Mill
- ☐ DuPont Danisco
- ☐ Patanjali

Pharma Industry

- ☐ Auronext Pharma
- ☐ Rusan Pharma

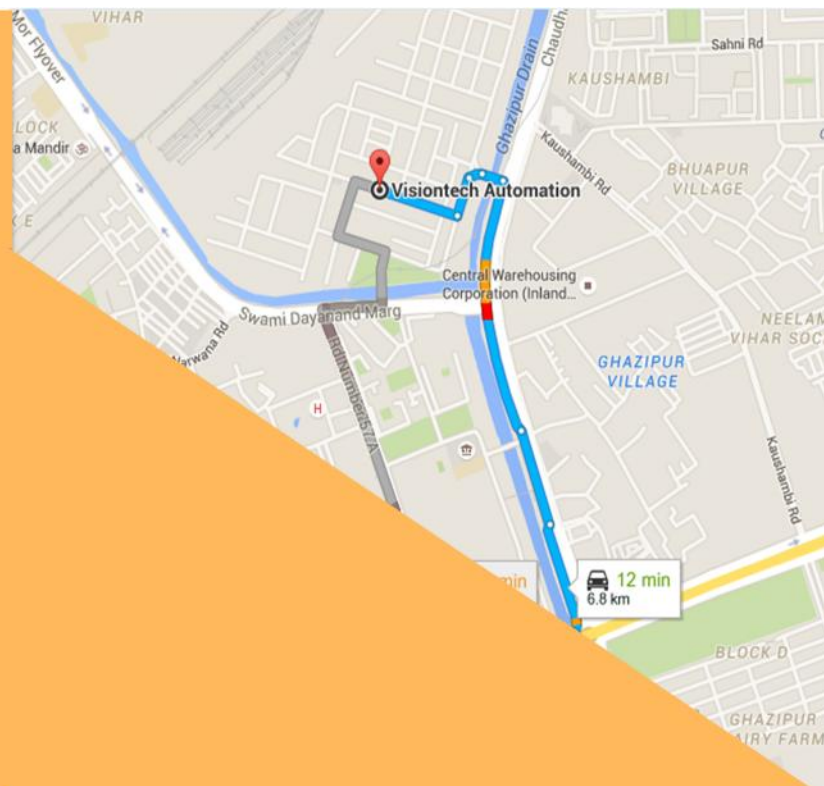
Oil & Gas Industry

- ☐ IOCL
- ☐ HPCL

Others

- ☐ Sterling & Wilson
- ☐ Bajaj Ecotech
- ☐ DIC India
- ☐ Rajiv Gandhi Cancer H.

VISIONTECH



VISIONTECH AUTOMATION
55, F.I.E, PATPARGANJ
INDUSTRIAL AREA,
DELHI-110092.

VISIONTECH AUTOMATION PVT. LTD.
A-8, DSIDC COMPLEX,
PATPARGANJ INDUSTRIAL
AREA, DELHI-110092.

CONTACT US:-

E-MAIL:-

SALES@VAPLONLINE.COM
SALES@VTAUTOMATION.COM

VISIT:- WWW.VAPLONLINE.COM

PH:- 011-42951054